

Belgian Cancer Registry



Cancer Fact Sheet **Colorectal Cancer**

ICD10 : C18-20

Belgium 2021

1. Cancer Incidence

1.1. Number of new diagnoses and incidence rates

Table 1: Colorectal Cancer: Average age at diagnosis, number of new cancer diagnoses (N), crude rate (CR), age-standardised incidence rates (ESR and WSR) and cumulative risk by sex and region, 2021

Males	Age (years)	N	CR	ESR	WSR	CRi
Belgium	69.8	4,387	77.3	53.6	36.1	4.09
Brussels-Capital Region	67.1	323	53.9	54.0	36.8	4.46
Flemish Region	70.5	2,596	78.8	50.5	33.9	3.74
Walloon Region	69.1	1,468	82.3	59.5	40.1	4.68

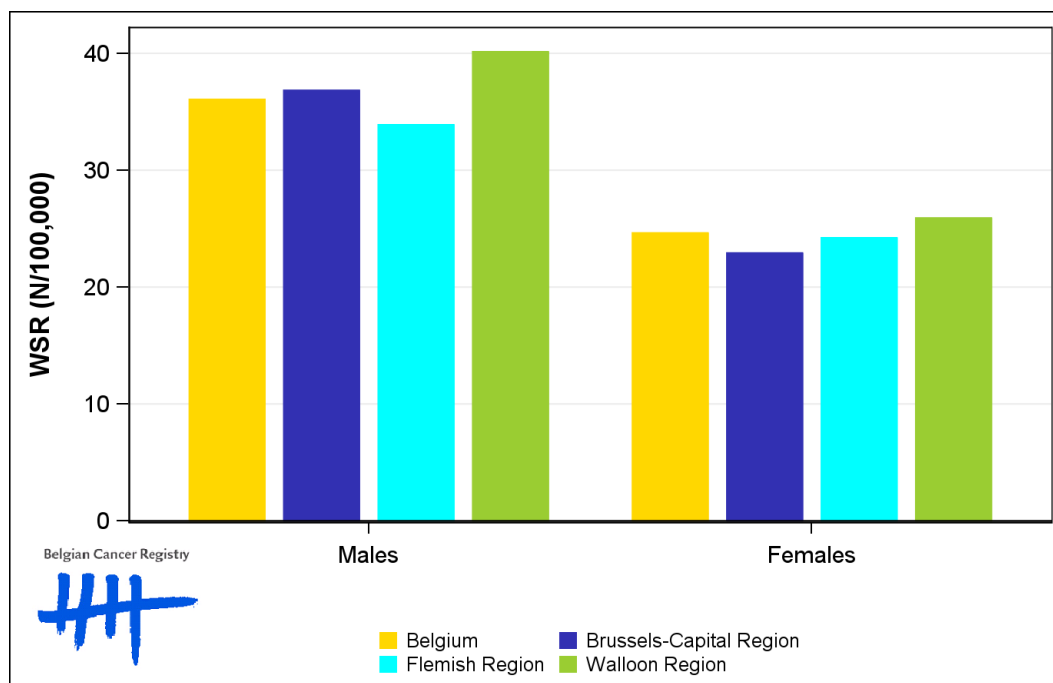
Females	Age (years)	N	CR	ESR	WSR	CRi
Belgium	71.4	3,494	59.8	35.8	24.6	2.75
Brussels-Capital Region	69.9	265	42.7	33.7	22.9	2.57
Flemish Region	72.0	2,090	62.2	35.0	24.2	2.65
Walloon Region	70.5	1,139	61.1	37.9	25.9	2.96

CR=Crude (all ages) Rate (N/100,000 person-years)
 ESR (1976)=Age-Standardised Rate, using the European Standard Population (N/100,000 person-years)
 WSR=Age-Standardised Rate, using the World Standard Population (N/100,000 person-years)
 CRi=Cumulative Risk for 0-74 years (%)

Belgian Cancer Registry



Figure 1: Colorectal Cancer: Age-standardised incidence rates by sex and region, 2021



1.2. Age-specific incidence rates

Table 2: Colorectal Cancer: Age-specific incidence rates, crude rate (CR) and age-standardised incidence rates (ESR and WSR) by sex, Belgium 2021

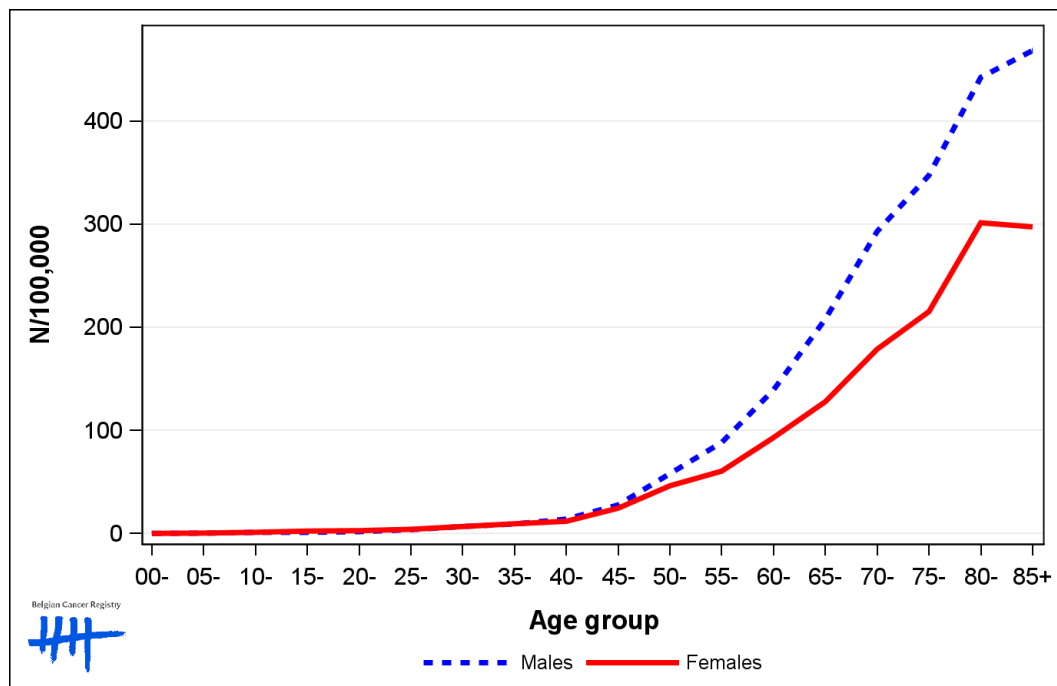
	00-	05-	10-	15-	20-	25-	30-	35-	40-	45-	50-	55-	60-	65-	70-	75-	80-	85+	CR	ESR	WSR
Males	0.0	0.3	2.0	0.9	2.1	4.4	9.3	11.0	15.4	28.4	54.8	85.7	136.6	210.2	273.9	361.1	401.8	473.8	77.3	53.6	36.1
Females	0.0	0.6	0.6	2.9	1.5	4.1	6.3	11.0	12.1	29.0	46.4	53.5	95.3	128.1	165.3	205.9	270.8	293.2	59.8	35.8	24.6

CR=Crude (all ages) Rate (N/100,000 person-years)

ESR (1976)=Age-Standardised Rate, using the European Standard Population (N/100,000 person-years)

WSR=Age-Standardised Rate, using the World Standard Population (N/100,000 person-years)

Figure 2: Colorectal Cancer: Age-specific incidence rates by sex, 2017-2021



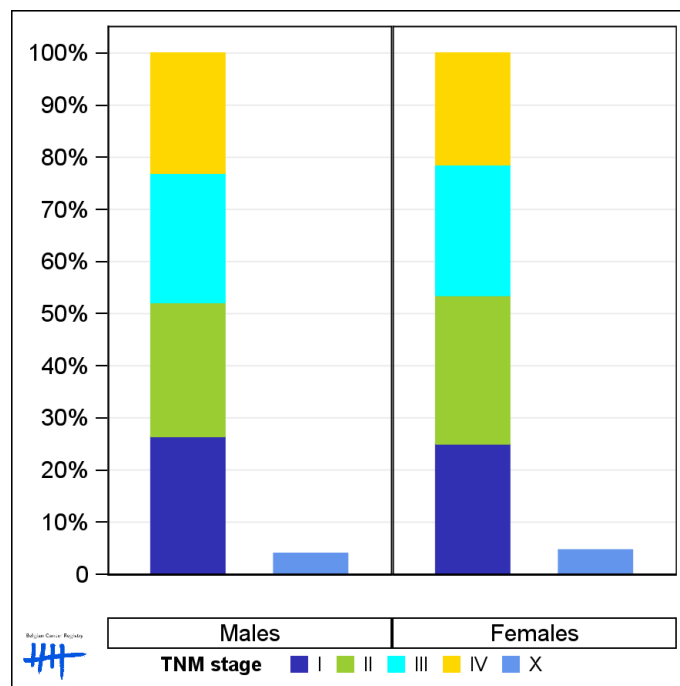
1.3. Combined stage

Table 3: Colorectal Cancer: Distribution of combined stage by sex, Belgium 2021

	Stage I	Stage II	Stage III	Stage IV	Stage X	Stage NA	Total
Males							
N	1,111	1,080	1,043	967	175	11	4,387
%	25.3	24.6	23.8	22.0	4.0	0.3	100
Females							
N	831	945	832	710	162	14	3,494
%	23.8	27.0	23.8	20.3	4.6	0.4	100

Staging according to the TNM 8th edition (Ref: Brierley JD, Gospodarowicz MK, Wittekind Ch. TNM classification of malignant tumours, UICC 8th edition)
 Combined TNM stage : compilation of pathological (pTNM) and clinical (cTNM) stage. pTNM prevails over cTNM, except when cTNM stage is IV
 Stage X: diagnoses with an unknown stage
 Stage NA: diagnoses with a histological diagnosis where no stage can be evaluated (Not Applicable)

Figure 3: Colorectal Cancer: Bar chart of known combined stage by sex, Belgium 2021



1.4. Trends in incidence

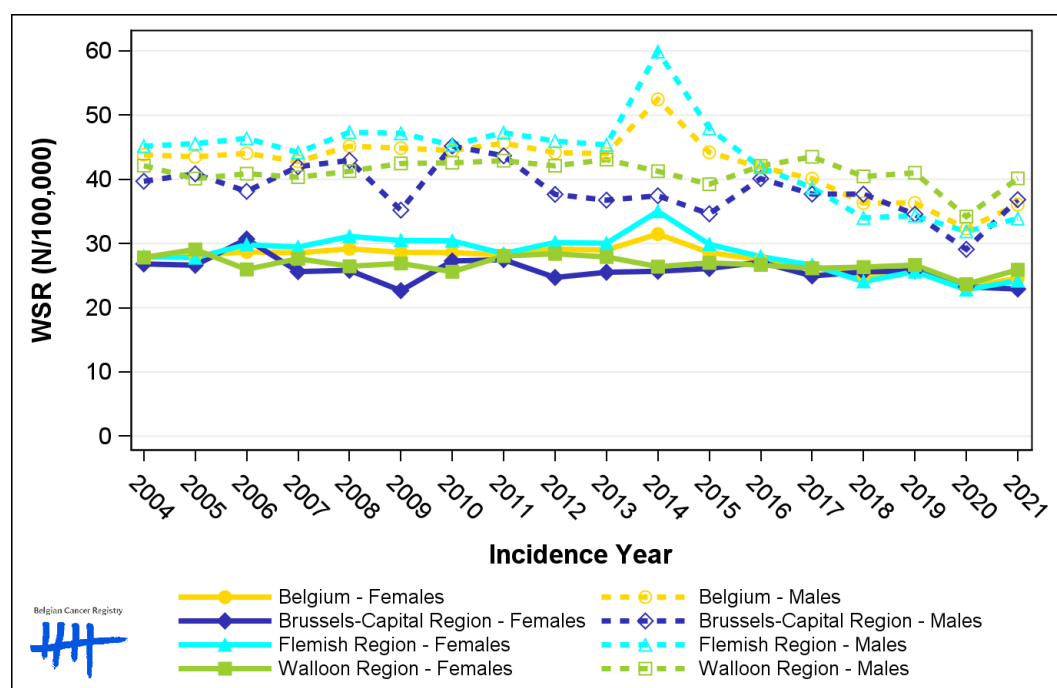
Table 4: Colorectal Cancer: Age-standardised incidence rates (WSR) and average annual percentage change (AAPC) by incidence year, sex and region

Males	2007	2008	2009	2010	2011	2012	2013	2014	2015	2016	2017	2018	2019	2020	2021	AAPC	95% CI
Belgium	42.8	45.2	44.9	44.5	45.6	44.2	44.0	52.5	44.2	41.9	40.1	36.3	36.3	32.3	36.1	-2.0	[-2.6; -1.3]
Brussels-Capital Region	42.0	43.0	35.2	45.2	43.7	37.7	36.8	37.4	34.6	40.1	37.7	37.7	34.6	29.1	36.8	-1.6	[-2.7; -0.4]
Flemish Region	44.2	47.4	47.2	45.4	47.3	46.0	45.4	59.9	47.9	41.9	38.7	34.0	34.3	31.9	33.9	-2.7	[-3.7; -1.7]
Walloon Region	40.3	41.3	42.5	42.6	42.9	42.1	43.1	41.3	39.2	42.1	43.5	40.5	41.0	34.2	40.1	-0.4	[-1.1; 0.3]

Females	2007	2008	2009	2010	2011	2012	2013	2014	2015	2016	2017	2018	2019	2020	2021	AAPC	95% CI
Belgium	28.5	29.2	28.6	28.6	28.2	29.2	29.0	31.5	28.6	27.5	26.3	25.0	25.9	23.2	24.6	-1.3	[-1.8; -0.9]
Brussels-Capital Region	25.6	25.8	22.7	27.3	27.5	24.7	25.5	25.7	26.1	27.1	25.0	25.6	25.8	23.3	22.9	-0.8	[-1.5; -0.0]
Flemish Region	29.5	31.1	30.5	30.4	28.4	30.2	30.1	35.0	29.9	28.0	26.6	24.1	25.6	22.8	24.2	-1.9	[-2.6; -1.2]
Walloon Region	27.6	26.5	26.9	25.6	28.1	28.4	27.9	26.4	27.0	26.7	26.2	26.3	26.7	23.7	25.9	-0.4	[-0.9; 0.1]

WSR=Age-Standardised Rate, using the World Standard Population (N/100,000 person-years)
 AAPC = Average Annual Percentage Change over the 2007-2021 period

Figure 4: Colorectal Cancer: Age-standardised incidence rates (WSR) by incidence year, sex and region



1.5. Incidence by broad age groups

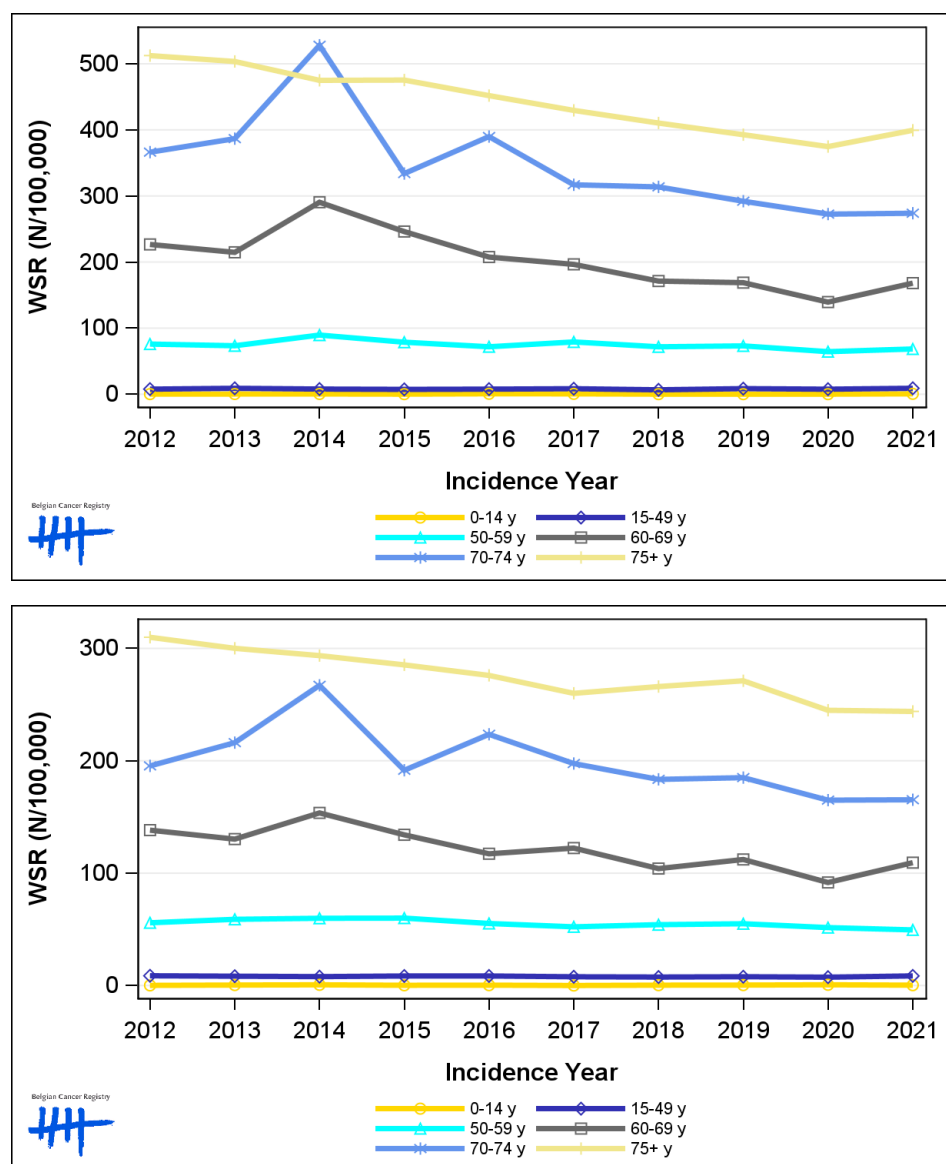
Table 5: Colorectal Cancer: Number of new diagnoses and age-standardised incidence rates (WSR) by broad age groups and incidence year by sex, Belgium

	N										WSR									
	2012	2013	2014	2015	2016	2017	2018	2019	2020	2021	2012	2013	2014	2015	2016	2017	2018	2019	2020	2021
Males																				
All ages	4,752	4,804	5,608	4,932	4,767	4,598	4,319	4,325	3,986	4,387	44.2	44.0	52.5	44.2	41.9	40.1	36.3	36.3	32.3	36.1
0-14 y	3	4	5	2	8	7	2	2	2	8	0.3	0.4	0.5	0.2	0.7	0.6	0.2	0.2	0.2	0.7
15-49 y	241	275	245	224	236	249	200	253	233	268	7.7	9.0	7.9	7.4	7.8	8.4	6.7	8.5	7.7	9.1
50-59 y	581	569	707	635	586	648	586	594	526	564	76.0	73.4	89.6	78.8	71.9	79.2	71.8	73.2	64.5	68.5
60-69 y	1,300	1,279	1,782	1,524	1,321	1,262	1,112	1,108	930	1,140	226.7	214.8	290.6	246.2	207.6	196.6	171.3	168.9	139.5	168.1
70-74 y	729	754	1,031	665	801	711	751	730	703	726	366.3	386.8	528.0	334.0	389.9	317.0	313.8	292.1	272.6	273.9
75+ y	1,898	1,923	1,838	1,882	1,815	1,721	1,668	1,638	1,592	1,681	512.4	503.6	475.1	475.5	451.9	429.6	410.4	392.8	374.8	399.4
Females																				
All ages	3,896	3,893	4,132	3,849	3,770	3,651	3,588	3,709	3,340	3,494	29.2	29.0	31.5	28.6	27.5	26.3	25.0	25.9	23.2	24.6
0-14 y	2	5	7	3	4	1	4	5	8	4	0.2	0.5	0.7	0.3	0.4	<0.1	0.4	0.5	0.7	0.4
15-49 y	259	245	233	247	249	226	219	222	217	247	8.7	8.4	8.0	8.5	8.5	7.9	7.6	7.9	7.5	8.6
50-59 y	429	457	474	482	445	426	434	439	413	394	55.9	59.0	59.9	60.0	55.3	52.3	54.2	55.0	51.6	49.6
60-69 y	838	817	986	866	784	824	706	771	638	772	138.3	130.3	153.6	134.1	117.3	122.3	104.1	112.2	91.7	109.4
70-74 y	458	494	606	438	525	503	496	521	477	490	195.5	216.1	267.1	191.6	223.6	197.5	183.5	185.0	165.0	165.3
75+ y	1,910	1,875	1,826	1,813	1,763	1,671	1,729	1,751	1,587	1,587	309.9	300.1	293.6	285.4	276.0	260.0	266.1	271.2	245.0	243.9

N=Number of invasive tumours

WSR=Age-Standardised Rate, using the World Standard Population (N/100,000 person-years)

Figure 5: Colorectal Cancer: Age-standardised incidence rates (WSR) versus incidence year by broad age groups for males (top) and females (bottom), Belgium



2. Relative survival

Table 6: Colorectal Cancer: 5-year relative survival proportion by sex, age group and region, Belgium 2017-2021

	5-year relative survival 2017-2021 (%)					
	Males			Females		
	N at risk	estimate	95% CI	N at risk	estimate	95% CI
Overall	20,936	69.7	[68.7, 70.7]	17,311	69.9	[68.7, 70.9]
Age group						
15-49 years	1,167	76.3	[73.1, 79.2]	1,115	79.6	[76.5, 82.4]
50-64 years	5,231	74.6	[73.0, 76.1]	3,707	76.6	[74.8, 78.3]
65+ years	14,539	67.3	[65.9, 68.7]	12,493	66.8	[65.3, 68.2]
Region						
Brussels-Capital Region	1,482	65.5	[61.5, 69.3]	1,381	66.8	[62.9, 70.6]
Flemish Region	12,569	71.9	[70.6, 73.2]	10,323	71.9	[70.5, 73.3]
Walloon Region	6,885	66.5	[64.6, 68.3]	5,607	66.8	[64.9, 68.8]

Figure 6: Colorectal Cancer: relative survival proportion by sex, Belgium 2017-2021

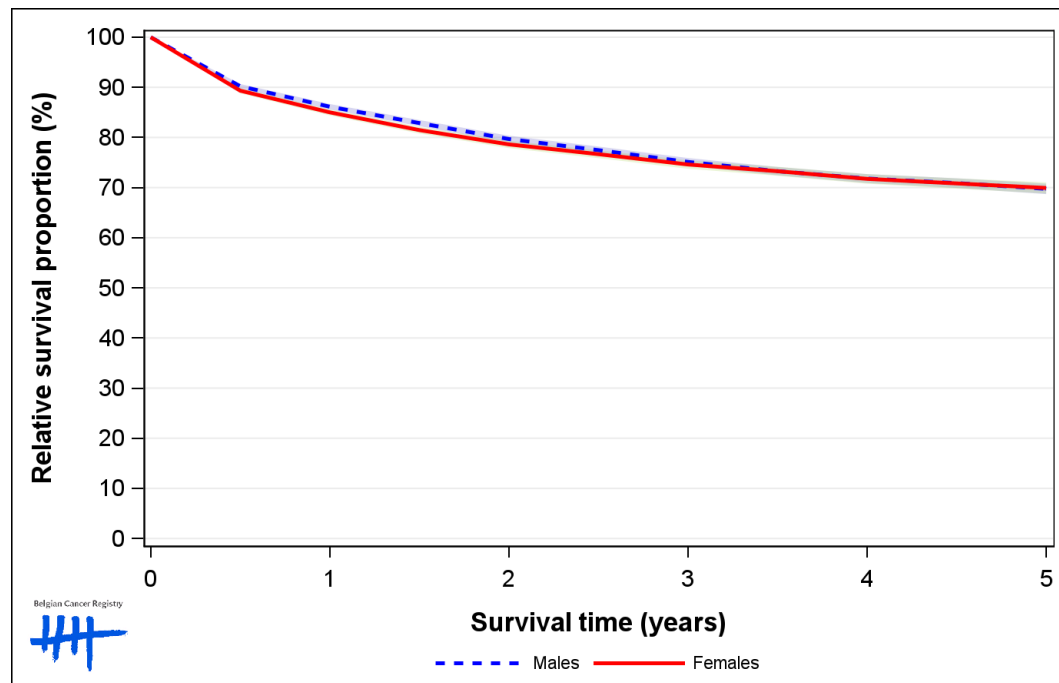


Figure 7: Colorectal Cancer: relative survival proportion by age group in males, Belgium 2017-2021

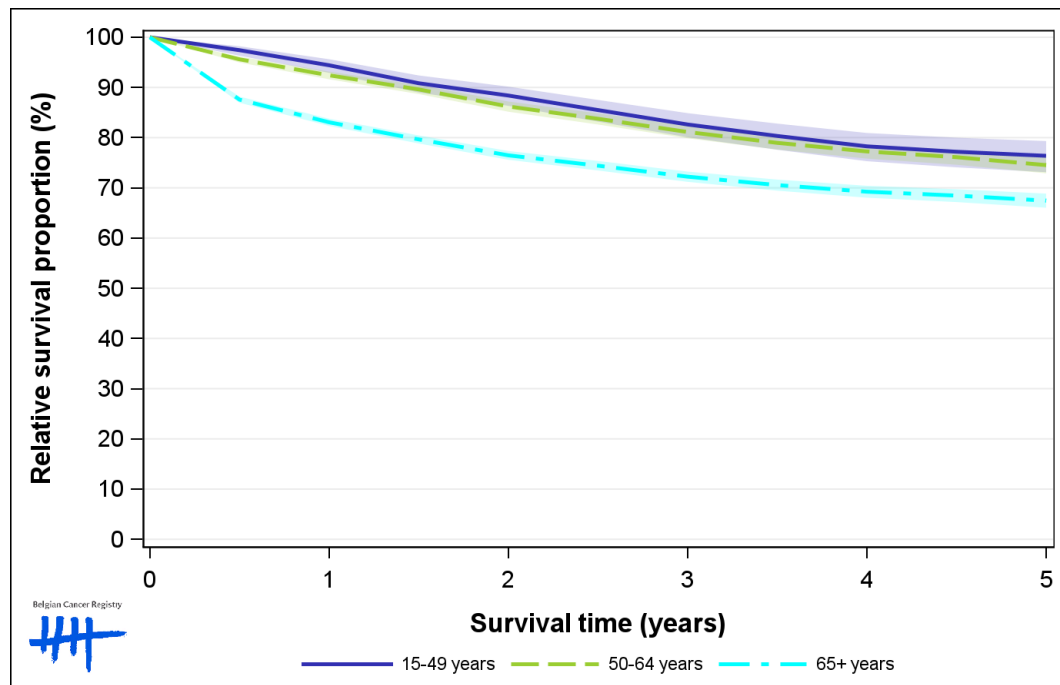


Figure 8: Colorectal Cancer: relative survival proportion by age group in females, Belgium 2017-2021

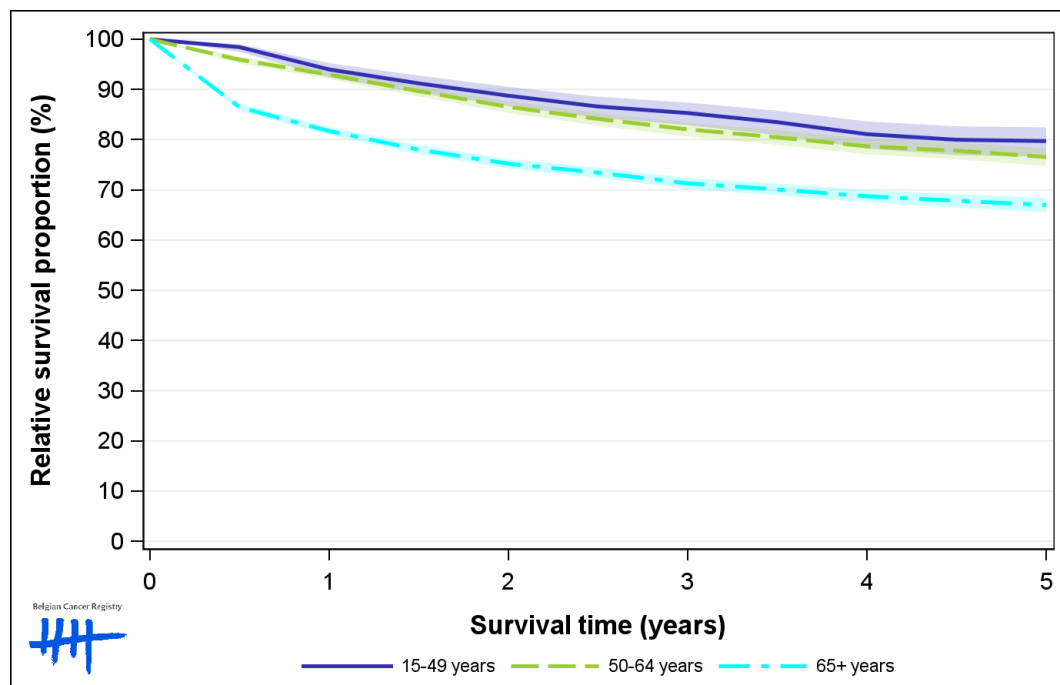


Figure 9: Colorectal Cancer: relative survival proportion by region in males, Belgium 2017-2021

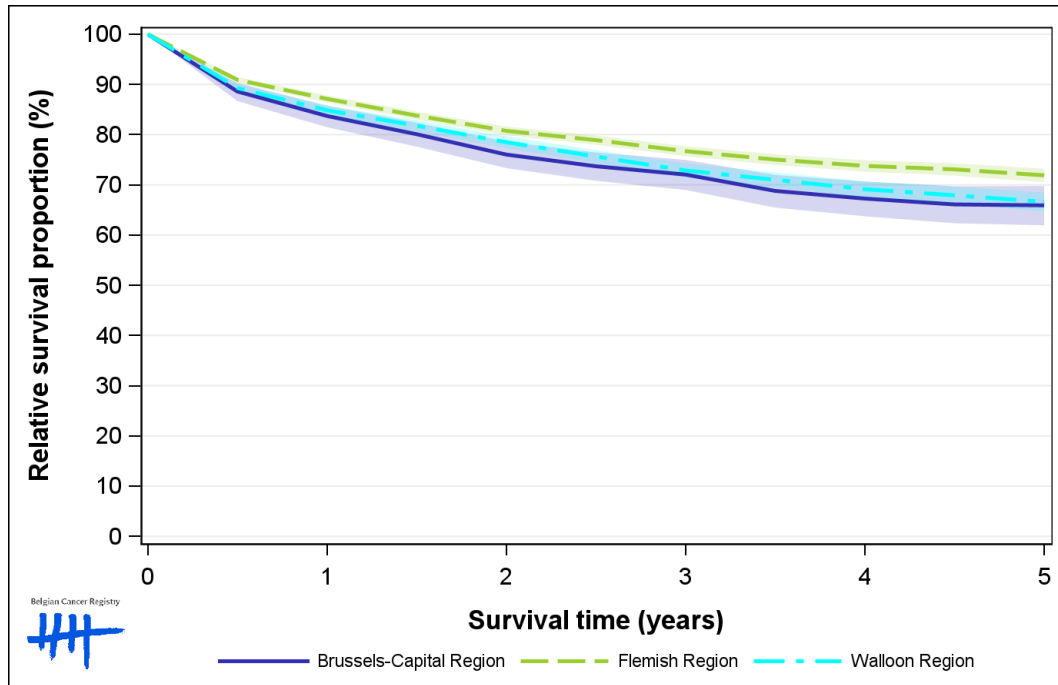


Figure 10: Colorectal Cancer: relative survival proportion by region in females, Belgium 2017-2021

