

Belgian Cancer Registry



Cancer Fact Sheet **Cervical Cancer**

ICD10 : C53

Belgium 2021

1. Cancer Incidence

1.1. Number of new diagnoses and incidence rates

Table 1: Cervical Cancer: Average age at diagnosis, number of new cancer diagnoses (N), crude rate (CR), age-standardised incidence rates (ESR and WSR) and cumulative risk by region, 2021

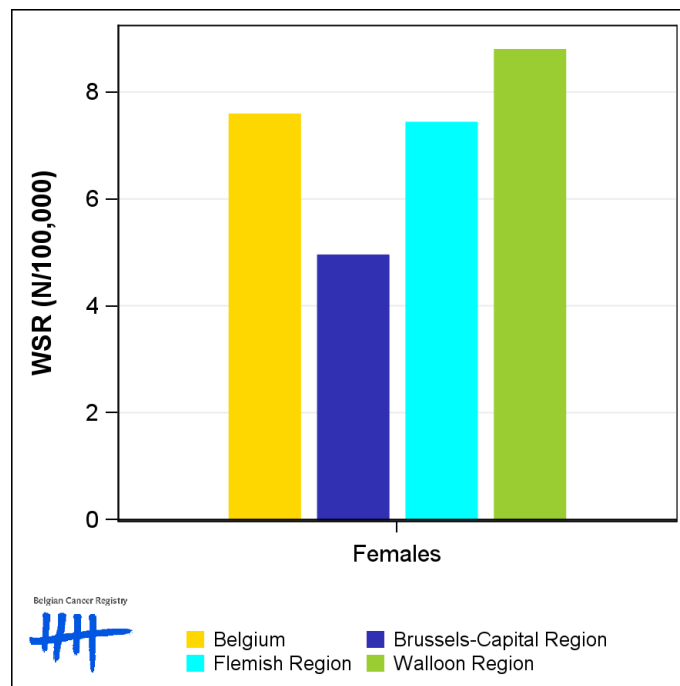
Females	Age (years)	N	CR	ESR	WSR	CRi
Belgium	55.2	641	11.0	9.7	7.6	0.76
Brussels-Capital Region	52.6	40	6.4	6.3	4.9	0.48
Flemish Region	55.6	366	10.9	9.4	7.4	0.74
Walloon Region	55.1	235	12.6	11.3	8.8	0.87

CR=Crude (all ages) Rate (N/100,000 person-years)
ESR (1976)=Age-Standardised Rate, using the European Standard Population (N/100,000 person-years)
WSR=Age-Standardised Rate, using the World Standard Population (N/100,000 person-years)
CRi=Cumulative Risk for 0-74 years (%)

Belgian Cancer Registry



Figure 1: Cervical Cancer: Age-standardised incidence rates by region, 2021



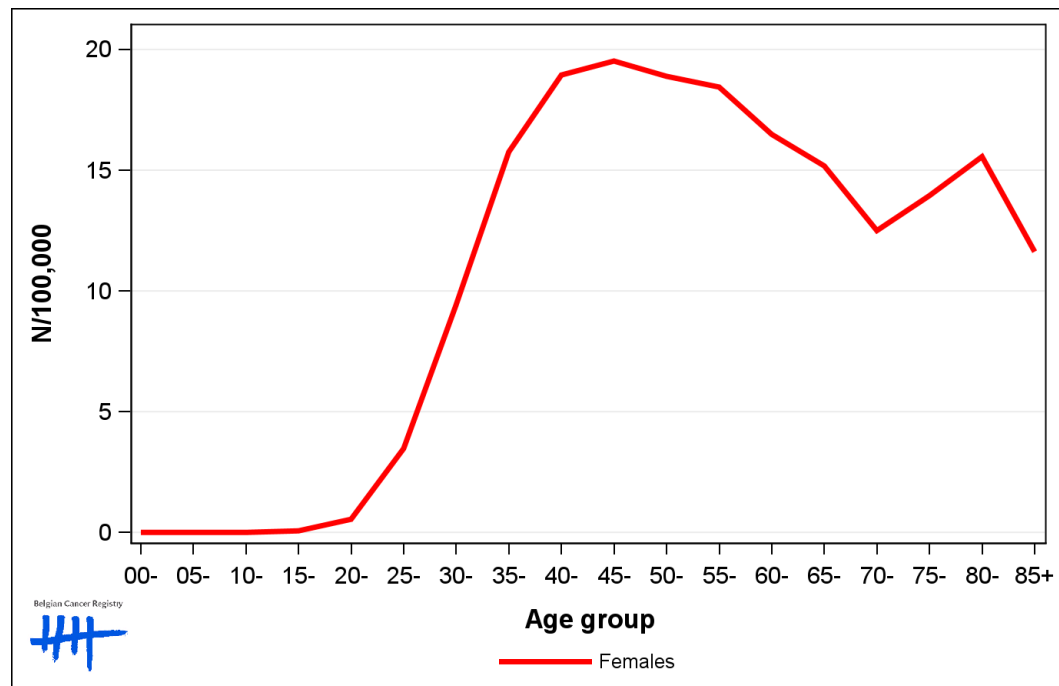
1.2. Age-specific incidence rates

Table 2: Cervical Cancer: Age-specific incidence rates, crude rate (CR) and age-standardised incidence rates (ESR and WSR), Belgium 2021

	00-	05-	10-	15-	20-	25-	30-	35-	40-	45-	50-	55-	60-	65-	70-	75-	80-	85+	CR	ESR	WSR
Females	0.0	0.0	0.0	0.0	0.3	2.2	9.3	16.6	18.8	23.1	19.3	18.5	15.3	17.2	11.5	10.3	16.2	14.0	11.0	9.7	7.6

CR=Crude (all ages) Rate (N/100,000 person-years)
 ESR (1976)=Age-Standardised Rate, using the European Standard Population (N/100,000 person-years)
 WSR=Age-Standardised Rate, using the World Standard Population (N/100,000 person-years)

Figure 2: Cervical Cancer: Age-specific incidence rates, 2017-2021



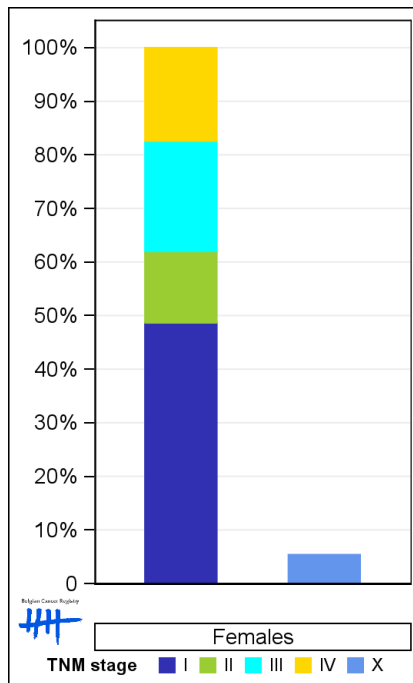
1.3. Combined stage

Table 3: Cervical Cancer: Distribution of combined stage, Belgium 2021

	Stage I	Stage II	Stage III	Stage IV	Stage X	Stage NA	Total
Females							
N	291	80	123	104	34	9	641
%	45.4	12.5	19.2	16.2	5.3	1.4	100

Staging according to the TNM 8th edition (Ref: Brierley JD, Gospodarowicz MK, Wittekind Ch. TNM classification of malignant tumours, UICC 8th edition)
 Combined TNM stage : compilation of pathological (pTNM) and clinical (cTNM) stage. pTNM prevails over cTNM, except when cTNM stage is IV
 Stage X: diagnoses with an unknown stage
 Stage NA: diagnoses with a histological diagnosis where no stage can be evaluated (Not Applicable)

Figure 3: Cervical Cancer: Bar chart of known combined stage, Belgium 2021



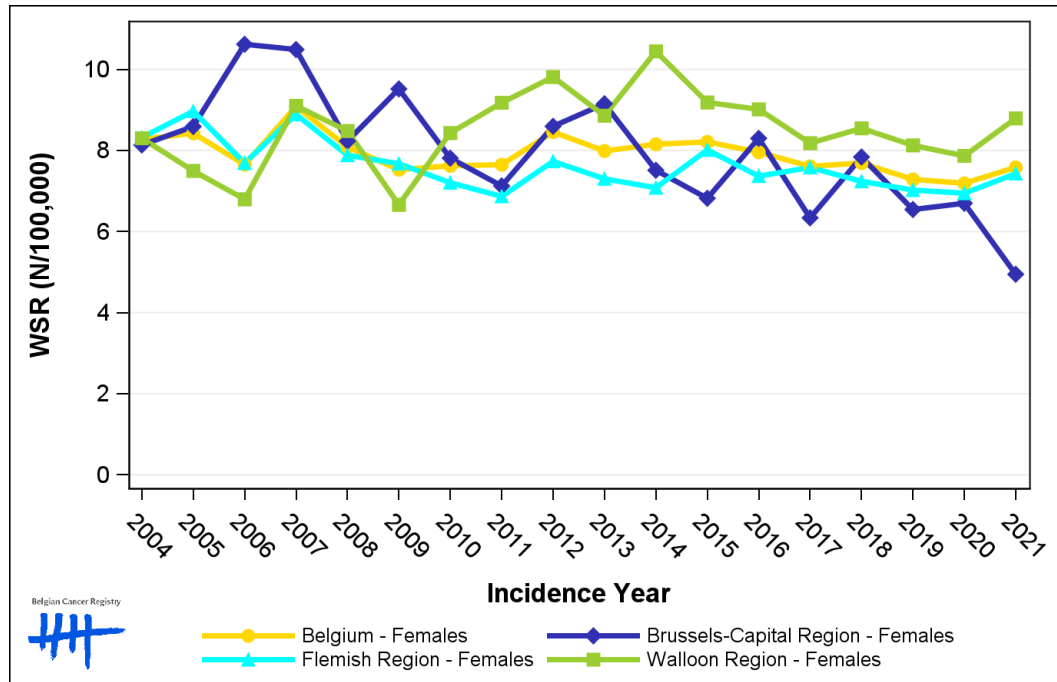
1.4. Trends in incidence

Table 4: Cervical Cancer: Age-standardised incidence rates (WSR) and average annual percentage change (AAPC) by incidence year and region

Females	2007	2008	2009	2010	2011	2012	2013	2014	2015	2016	2017	2018	2019	2020	2021	AAPC	95% CI
Belgium	9.1	8.1	7.5	7.6	7.6	8.5	8.0	8.2	8.2	8.0	7.6	7.7	7.3	7.2	7.6	-1.5	[-2.0; -1.0]
Brussels-Capital Region	10.5	8.2	9.5	7.8	7.1	8.6	9.2	7.5	6.8	8.3	6.3	7.8	6.5	6.7	4.9	-3.2	[-4.7; -1.6]
Flemish Region	8.9	7.9	7.7	7.2	6.9	7.7	7.3	7.1	8.0	7.4	7.6	7.2	7.0	6.9	7.4	-0.8	[-1.5; -0.0]
Walloon Region	9.1	8.5	6.7	8.4	9.2	9.8	8.9	10.4	9.2	9.0	8.2	8.5	8.1	7.9	8.8]-0.1;0[[-1.3; 1.2]

WSR=Age-Standardised Rate, using the World Standard Population (N/100,000 person-years)
 AAPC = Average Annual Percentage Change over the 2007-2021 period

Figure 4: Cervical Cancer: Age-standardised incidence rates (WSR) by incidence year and region



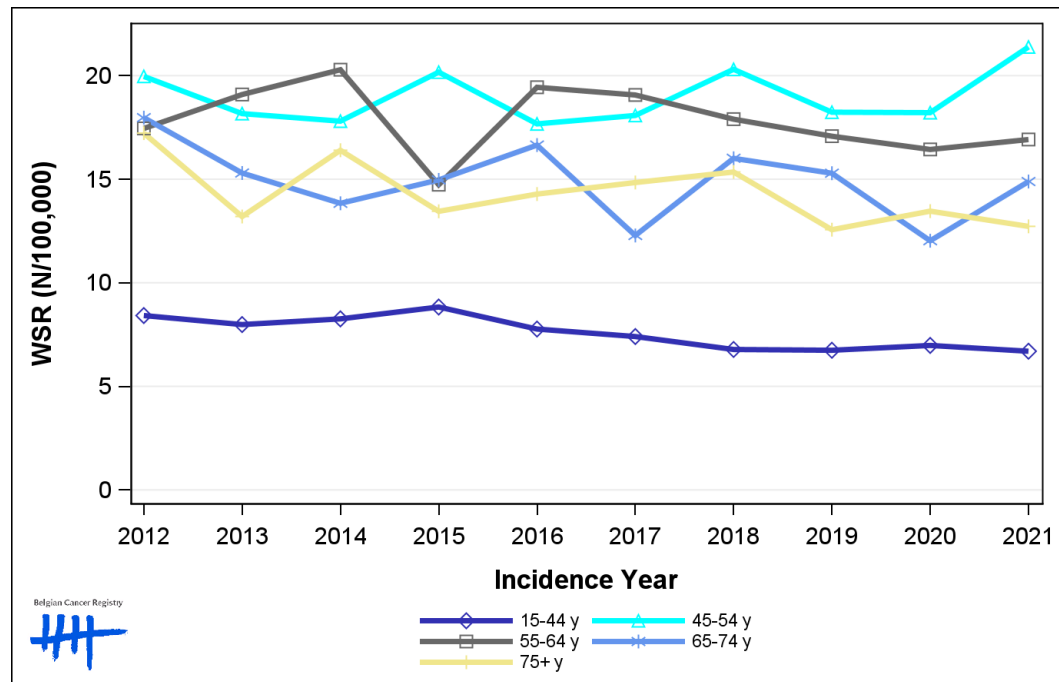
1.5. Incidence by broad age groups

Table 5: Cervical Cancer: Number of new diagnoses and age-standardised incidence rates (WSR) by broad age groups and incidence year, Belgium

	N											WSR									
	2012	2013	2014	2015	2016	2017	2018	2019	2020	2021	2012	2013	2014	2015	2016	2017	2018	2019	2020	2021	
Females																					
All ages	682	634	666	648	647	633	644	611	602	641	8.5	8.0	8.2	8.2	8.0	7.6	7.7	7.3	7.2	7.6	
0-14 y	0	0	0	0	0	0	0	0	0	0	0.0	0.0	0.0	0.0	0.0	0.0	0.0	0.0	0.0	0.0	
15-44 y	214	203	208	223	195	188	172	172	180	176	8.4	8.0	8.3	8.8	7.8	7.4	6.8	6.7	7.0	6.7	
45-54 y	158	145	141	156	138	145	158	143	140	161	20.0	18.2	17.8	20.2	17.7	18.1	20.3	18.2	18.2	21.4	
55-64 y	120	132	142	105	141	141	134	129	126	131	17.5	19.1	20.3	14.7	19.4	19.1	17.9	17.1	16.4	16.9	
65-74 y	91	79	73	81	92	70	90	92	74	90	18.0	15.3	13.8	15.0	16.6	12.3	16.0	15.3	12.0	14.9	
75+ y	99	75	102	83	81	89	90	75	82	83	17.2	13.2	16.4	13.5	14.3	14.8	15.3	12.6	13.5	12.7	

N=Number of invasive tumours
WSR=Age-Standardised Rate, using the World Standard Population (N/100,000 person-years)

Figure 5: Cervical Cancer: Age-standardised incidence rates (WSR) versus incidence year by broad age groups, Belgium



Belgian Cancer Registry

Legend:
 15-44 y (dark blue diamond)
 45-54 y (cyan triangle)
 55-64 y (black square)
 65-74 y (light blue asterisk)
 75+ y (yellow plus)

2. Relative survival

Table 6: Cervical Cancer: 5-year relative survival proportion by age group and region, Belgium 2017-2021

	5-year relative survival 2017-2021 (%)		
	Females		
	N at risk	estimate	95% CI
Overall	3,099	68.7	[66.5, 70.7]
Age group			
15-44 years	875	85.5	[82.5, 88.0]
45-64 years	1,393	70.0	[66.9, 72.9]
65+ years	831	46.8	[41.7, 51.9]
Region			
Brussels-Capital Region	260	68.3	[60.3, 75.3]
Flemish Region	1,738	69.9	[67.1, 72.6]
Walloon Region	1,102	66.7	[62.9, 70.3]

Figure 6: Cervical Cancer: relative survival proportion, Belgium 2017-2021

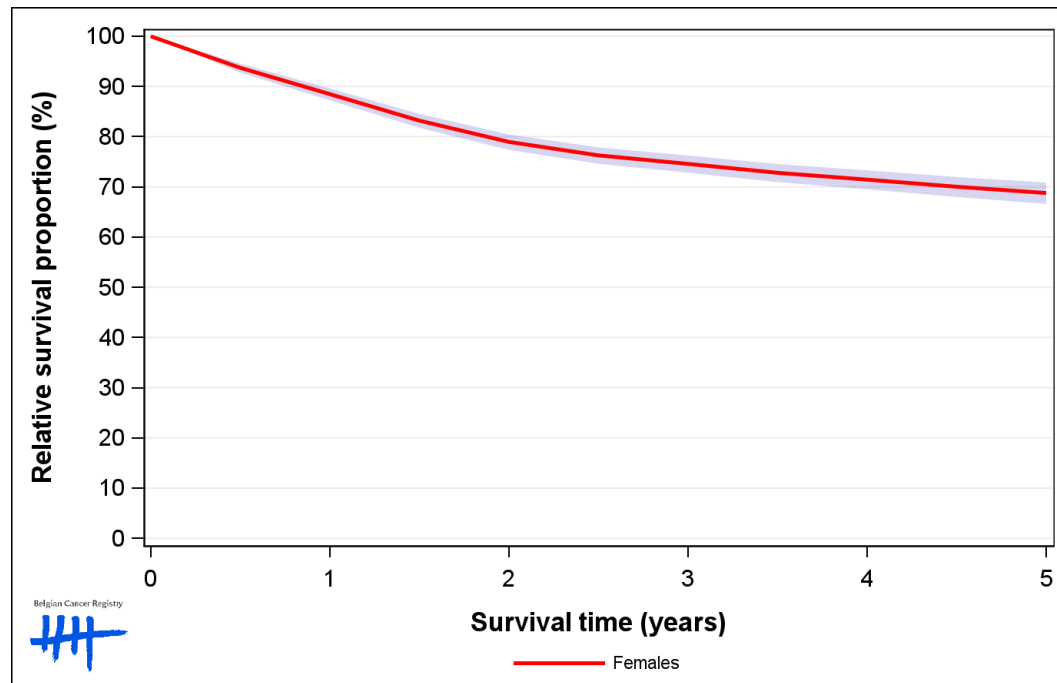


Figure 7: Cervical Cancer: relative survival proportion by age group, Belgium 2017-2021

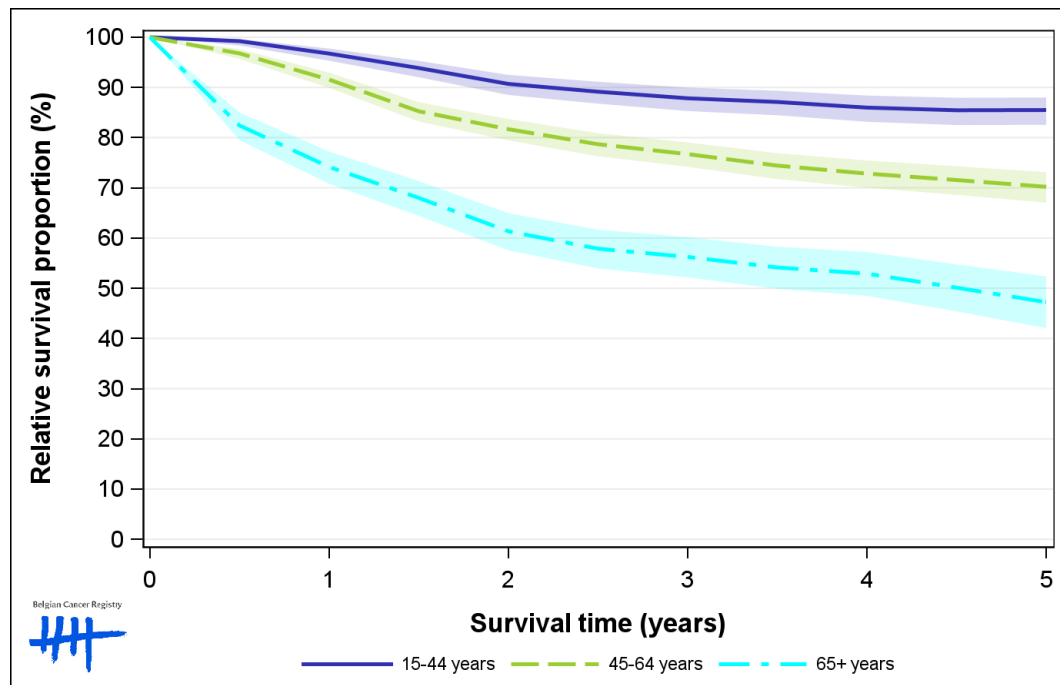


Figure 8: Cervical Cancer: relative survival proportion by region, Belgium 2017-2021

